

**CONNECTICUT
CRITICS CIRCLE**
AWARDS

MONDAY, JUNE 11, 2018

HOSTED BY

WESTPORT COUNTRY PLAYHOUSE

28TH ANNUAL
**CONNECTICUT
 CRITICS CIRCLE**
 AWARDS

MONDAY, JUNE 11, 2018

JENN HARRIS & MATT WILKAS
 MASTERS OF CEREMONIES

SPECIAL MUSICAL PERFORMANCE

“96,000”

PERFORMED BY MEMBERS OF THE CAST FROM LIN-MANUEL MIRANDA'S
IN THE HEIGHTS, CURRENTLY AT PLAYHOUSE ON PARK

THE TOM KILLEN AWARD
 presented to

MICHAEL O'FLAHERTY



Michael O'Flaherty has been the man behind the music — and the one holding the baton, too. Entering his 27th season as Goodspeed's resident music director, O'Flaherty has guided more than 100 shows at the East Haddam and Chester theaters, several of them (*By Jeeves*, *Gentleman Prefer Blondes*) to Broadway. He's also a key figure behind the Festival of New Musicals, as well as the composer for a new locally-rooted show, *A Connecticut Christmas Carol*.

Mr. O'Flaherty's expertise also goes well beyond Goodspeed, being the musical supervisor for productions at Paper Mill Playhouse, North Shore Music Theatre, Playwrights Horizons, Ford's Theatre, the Kennedy Center, and the Williamstown Theatre Festival, among others. He's guided first-class revivals, overseen new orchestrations, and nurtured brand new work and young artists.

OUTSTANDING COSTUME DESIGN

Linda Cho	<i>Rags</i>	Goodspeed Musicals
Linda Cho	<i>The Age of Innocence</i>	Hartford Stage
Joshua Pearson	<i>A Midsummer Night's Dream</i>	Hartford Stage
Fabian Fidel Aguilar	<i>Romeo and Juliet</i>	Westport Country Playhouse
Leon Dobkowski	<i>The Legend of Georgia McBride</i>	TheaterWorks

OUTSTANDING LIGHTING

Ben Stanton	<i>The Age of Innocence</i>	Hartford Stage
Michael Chybowski	<i>1776</i>	Connecticut Repertory Theatre
Stephen Strawbridge	<i>Native Son</i>	Yale Repertory Theatre
Matthew Richards	<i>Appropriate</i>	Westport Country Playhouse
Yi Zhao	<i>Father Comes Home From the Wars (Parts 1, 2 & 3)</i>	Yale Repertory Theatre

OUTSTANDING SOUND

Frederick Kennedy	<i>Native Son</i>	Yale Repertory Theatre
Kate Marvin	<i>Grounded</i>	Westport Country Playhouse
Fitz Patton	<i>Appropriate</i>	Westport Country Playhouse
Jane Shaw	<i>A Lesson from Aloes</i>	Hartford Stage
Robert Kaplowitz	<i>Office Hour</i>	Long Wharf Theatre

OUTSTANDING PROJECTIONS

Yana Birykova	<i>Grounded</i>	Westport Country Playhouse
Luke Cantarella	<i>Rags</i>	Goodspeed Musicals
Lucas Clopton & Darren Alley	<i>A Midsummer Night's Dream</i>	Hartford Stage
Wladimiro A. Woyno R.	<i>Kiss</i>	Yale Repertory Theatre

OUTSTANDING SET DESIGN

Emona Stoykova	<i>An Enemy of the People</i>	Yale Repertory Theatre
Alexander Dodge	<i>A Midsummer Night's Dream</i>	Hartford Stage
Andrew Boyce	<i>Appropriate</i>	Westport Country Playhouse
David Lewis	<i>The Diary of Anne Frank</i>	Playhouse on Park
Martin Scott Marchitto	<i>The Fantasticks</i>	Ivoryton Playhouse

OUTSTANDING ENSEMBLE

Cast of AVENUE Q (Playhouse on Park)

Weston Chandler Long, James Fairchild, Ashley Brooke, Peej Mele, E.J. Zimmerman, Abena Mensah-Bonsu, Colleen Welsh

Cast of THE WOLVES (TheaterWorks)

Shannon Keegan, Claire Saunders, Dea Julien, Carolyn Cutillo, Emily Murphy, Caitlin Zoz, Rachel Caplan, Olivia Hoffman, Karla Gallegos, Megan Byrne

Cast of THE CHOSEN (Long Wharf Theatre)

Ben Edelman, George Guidall, Steven Skybell, Max Wolkowitz

Cast of THE GAME'S AFOOT (Ivoryton Playhouse)

Erik Bloomquist, Victoria Bundonis, Molly Densmore, Katrina Ferguson, Michael Iannucci, Craig MacDonald, Maggie McGlone-Jennings, Beverly J. Taylor

OUTSTANDING SOLO PERFORMANCE

Elizabeth Stahlmann *Grounded* Westport Country Playhouse

OUTSTANDING DEBUT

Shannon Keegan *The Wolves* TheaterWorks
 Megan O'Callaghan *The Bridges of Madison County and Fun Home* Music Theatre of Connecticut
 Noah Kierserman *Newsies* Connecticut Repertory Theatre

OUTSTANDING CHOREOGRAPHY

Katie Spelman *Oklahoma!* Goodspeed Musicals
 Christopher d'Amboise *Newsies* Connecticut Repertory Theatre
 Kelli Barclay *The Will Rogers Follies* Goodspeed Musicals
 Todd L. Underwood *Saturday Night Fever* Ivoryton Playhouse

SPECIAL AWARDS

Billy Bivona
 Musical Score for
 CONSTELLATIONS
 (TheaterWorks)

**Broadway
 Method Academy**
 Resident Conservatory
 of Westport
 Country Playhouse

Flock Theatre
 New London, CT

OUTSTANDING FEATURED ACTRESS — PLAY

Judith Ivy *Fireflies* Long Wharf Theatre
 Darrie Lawrence *The Age of Innocence* Hartford Stage
 Carly Polistina *The Crucible* Connecticut Repertory Theatre
 Sierra Boggess *The Age of Innocence* Hartford Stage
 Helen Cespedes *The Age of Innocence* Hartford Stage

OUTSTANDING FEATURED ACTOR — PLAY

James Cusati-Moyer *Kiss* Yale Repertory Theatre
 Peter Francis James *Romeo and Juliet* Westport Country Playhouse
 Tom Pecinka *Father Comes Home From the Wars (Parts 1, 2 & 3)* Yale Repertory Theatre
 Dan Hiatt *Father Comes Home From the Wars (Parts 1, 2 & 3)* Yale Repertory Theatre
 Jason Bowen *Native Son* Yale Repertory Theatre

OUTSTANDING FEATURED ACTRESS — MUSICAL

Jodi Stevens *Singin' in the Rain* Summer Theater of New Canaan
 Gizel Jimenez *Oklahoma!* Goodspeed Musicals
 Nora Fox *Saturday Night Fever* Ivoryton Playhouse
 Megan O'Callaghan *Fun Home* Music Theatre of Connecticut
 Kimberly Immanuel *The Fantasticks* Ivoryton Playhouse

OUTSTANDING FEATURED ACTOR — MUSICAL

Matt Faucher *Oklahoma!* Goodspeed Musicals
 Joe Callahan *Million Dollar Quartet* Ivoryton Playhouse
 Sean MacLaughlin *Rags* Goodspeed Musicals
 David Garrison *The Will Rogers Follies* Goodspeed Musicals
 Cory Candelet *The Fantasticks* Ivoryton Playhouse

THE TOM KILLEN AWARD — MICHAEL O'FLAHERTY

Presented by Donna Lynn Cooper Hilton. Ms. Hilton is line producer at Goodspeed Musicals and leads artistic efforts on all productions at its East Haddam and Chester theaters. She is past president of the National Alliance for Musical Theatre and serves on the selection committee for NAMT's Festival of Musicals.

OUTSTANDING DIRECTOR — PLAY

James Bundy *An Enemy of the People* Yale Repertory Theatre
 Seret Scott *Native Son* Yale Repertory Theatre
 Ezra Barnes *The Diary of Anne Frank* Playhouse on Park
 Eric Ort *The Wolves* TheaterWorks
 Doug Hughes *The Age of Innocence* Hartford Stage

OUTSTANDING DIRECTOR — MUSICAL

Terrence Mann *1776* Connecticut Repertory Theatre
 Jenn Thompson *Oklahoma!* Goodspeed Musicals
 Kevin Connors *Fun Home* Music Theatre of Connecticut
 Rob Ruggiero *Rags* Goodspeed Musicals
 Brian Feehan *The Fantasticks* Ivoryton Playhouse

OUTSTANDING ACTOR — PLAY

Reg Rogers	<i>An Enemy of the People</i>	Yale Repertory Theatre
Jerod Haynes	<i>Native Son</i>	Yale Repertory Theatre
Jamison Stern	<i>The Legend of Georgia McBride</i>	TheaterWorks
Boyd Gaines	<i>The Age of Innocence</i>	Hartford Stage
Daniel Chung	<i>Office Hour</i>	Long Wharf Theatre

OUTSTANDING ACTRESS — PLAY

Jackie Chung	<i>Office Hour</i>	Long Wharf Theatre
Isabelle Barbier	<i>The Diary of Anne Frank</i>	Playhouse on Park
Mia Dillon	<i>Seder</i>	Hartford Stage
Jane Alexander	<i>Fireflies</i>	Long Wharf Theatre
Cecelia Riddett	<i>The Revisionist</i>	Playhouse on Park

OUTSTANDING ACTOR — MUSICAL

Jamie LaVerdiere	<i>1776</i>	Connecticut Repertory Theatre
Rhett Guter	<i>Oklahoma!</i>	Goodspeed Musicals
Jim Schubert	<i>Newsies</i>	Connecticut Repertory Theatre
David Pittsinger	<i>The Fantasticks</i>	Ivoryton Playhouse
Michael Notardonato	<i>Saturday Night Fever</i>	Ivoryton Playhouse

OUTSTANDING ACTRESS — MUSICAL

Samantha Massell	<i>Rags</i>	Goodspeed Musicals
Mia Pinero	<i>West Side Story</i>	Ivoryton Playhouse
Juliet Lambert Pratt	<i>The Bridges of Madison County</i>	Music Theatre of Connecticut
Samantha Bruce	<i>Oklahoma!</i>	Goodspeed Musicals
Annabelle Fox	<i>Singin' in the Rain</i>	Summer Theatre of New Canaan

OUTSTANDING PRODUCTION — PLAY

<i>An Enemy of the People</i>	Yale Repertory Theatre
<i>The Diary of Anne Frank</i>	Playhouse on Park
<i>The Chosen</i>	Long Wharf Theatre
<i>Fireflies</i>	Long Wharf Theatre
<i>Father Comes Home From the Wars (Parts 1, 2 & 3)</i>	Yale Repertory Theatre
<i>The Age of Innocence</i>	Hartford Stage

OUTSTANDING PRODUCTION — MUSICAL

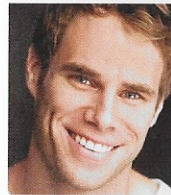
<i>Oklahoma!</i>	Goodspeed Musicals
<i>Million Dollar Quartet</i>	Seven Angels
<i>Rags</i>	Goodspeed Musicals
<i>1776</i>	Connecticut Repertory Theatre
<i>Fun Home</i>	Music Theatre of Connecticut
<i>The Age of Innocence</i>	Hartford Stage

MASTERS OF CEREMONIES

Jenn Harris and Matthew Wilkas star in *Christmas on the Rocks*, the holiday perennial at TheaterWorks, while penning one of the plays in that show. They also wrote and star in the funnyordie.com online series *New York is Dead*, which premiered at the TriBeCa Film Festival this spring and won Best Comedy at The New York Television Festival.



JENN HARRIS is an actor, writer and producer whose off-Broadway acting credits include *Silence! The Musical*, *Modern Orthodox*, *All in the Timing* and *The Understudy*. Harris is also a writer for *Billy on the Street*, co-hosts the podcast *Touché* on iTunes, and is the creator and host of *Offer Only*, a live show where actors come to recreate auditions for shows they did not get.



MATTHEW WILKAS, an actor-writer, was in Broadway's *Spider-Man: Turn Off the Dark* and starred in the award-winning indie film *Gayby*. Most recently he was nominated for an Ovation Award for his performance in *The Pride* at the Wallace Annenberg Center for the Arts in Beverly Hills. His TV credits include "Looking," "Ugly Betty," "Hope and Faith," and the upcoming "Bonding" and "Boy Culture."

COMING UP AT THE PLAYHOUSE

A FLEA IN HER EAR

A new version of Georges Feydeau's farce
by **DAVID IVES**
directed by **MARK LAMOS**

A co-production with Resident Ensemble Players
at the University of Delaware

JULY 10-28

WESTPORTPLAYHOUSE.ORG 203.227.4177

WESTPORT COUNTRY PLAYHOUSE

Delaware REP production of *A Flea in Her Ear* with Elizabeth Heflin, Lee E. Ernst, and Stephen Pelinski. Photo Evan Krape.

OUR HISTORY

The CCC, founded in 1990, is a statewide organization of reviewers, feature writers, columnists and broadcasters. Its members represent newspapers, newspaper chains, magazines, radio programs, websites, and other media outlets, reaching millions throughout Connecticut, Massachusetts, Rhode Island, and New York.

OUR PURPOSE

The CCC Awards Program was instituted to honor the actors, directors, designers and others who make professional theater in Connecticut so outstanding. The evening is the one time when Connecticut theater folks can gather and tell war stories.

OUR WEBSITE

The organization's newly reformatted website, www.ctcritics.org, provides information on Connecticut theater as well as reviews of current theatrical productions.

THE TOM KILLEN AWARD

Established in memory of Tom Killen, a fine critic who died at the age of 33 in 1989. The award is given to someone who has made extraordinary contributions to Connecticut's professional theater and as a recognition of his or her many achievements.

Members of the Connecticut Critics Circle

Brooks Appelbaum	Marlene S. Gaylinn	Tara Kennedy
Irene Backalenick	Bonnie K. Goldberg	Joe Meyers
Amy J. Barry	Susan S. Granger	Thomas W. Nissley
Donald Brown	Tom Holehan	Zander Opper
Stuart J. Brown	Karen Isaacs	Bessy Reyna
Don Church	Nancy Sasso Janis	Frank Rizzo
Dolly Curtis	Tim Leninger	David A. Rosenberg
Geary E. Danihy	Stephanie C. Lyons-Keeley	Tony Schillaci
Howard Steven Frydman	Wayne J. Keeley	Lauren Yarger

A special thanks to **Westport Country Playhouse** for hosting this event

